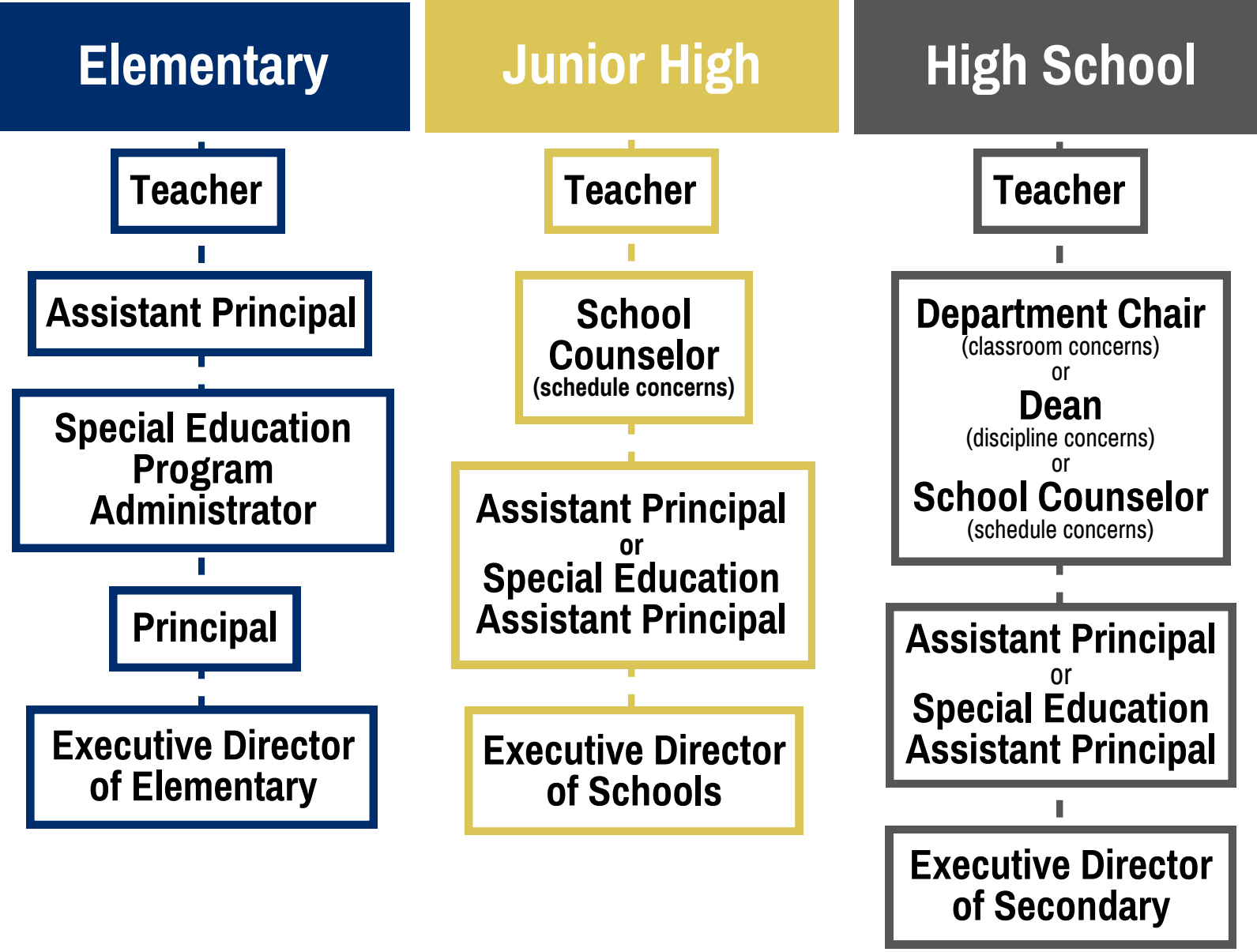


Who to Contact With Questions and Concerns

Following the chain of command process ensures that all parties involved are properly informed of the situation.

Communications between school staff and families is integral to the district’s program of success for students. Generally speaking, questions or concerns should first be discussed with the staff member who is closest to the situation. For example, if you have a concern about a classroom or a teacher, it should be directed to the teacher first. If you have a concern about the school, it should be directed to the principal and so forth.



School staff member contact information is available at each school’s website.

Contact information for district administration can be found at www.sd308.org.

Requestors should expect a response from the staff member listed or their designee in a timely fashion.

Oswego Community Unit School District 308 is committed to providing timely responses to questions and taking prompt, decisive action when concerns are brought forth by any of our stakeholders. In every instance, we respond to inquiries in accordance with all relevant district policies and procedures.